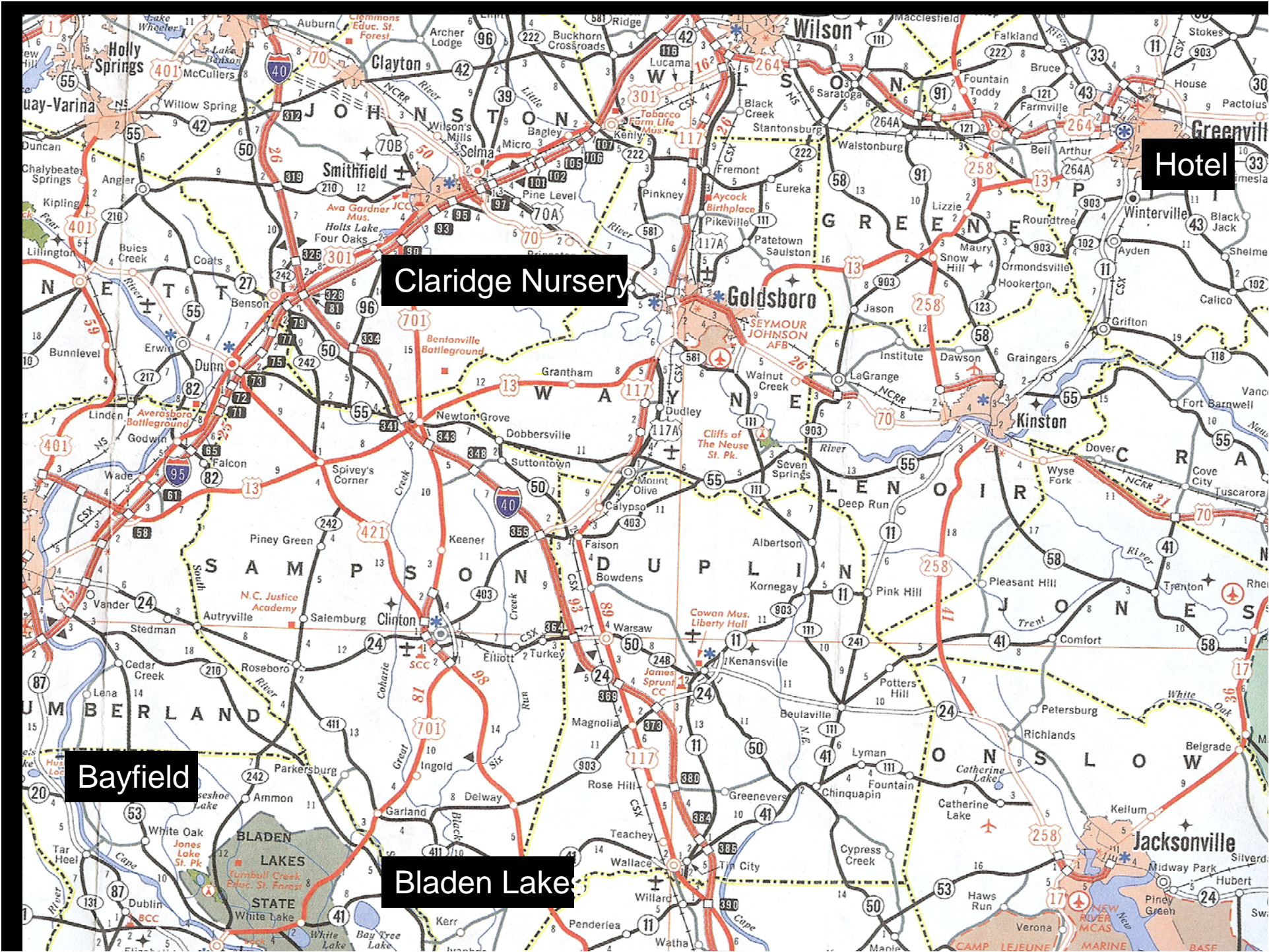




2009 AWC Field Trip

CLARIDGE NURSERY
BLADEN LAKES
BAYFIELD

Wednesday , June 10, 2009



Hotel

Claridge Nursery

Bayfield

Bladen Lakes

THEME

- Artificial Regeneration
 - ▣ 1000 acres and 1million trees
- AWC Natural Communities
 - ▣ Carolina Bays
 - ▣ Sandhill Seep
 - ▣ Bay Forest
 - ▣ Stream Head AWC Forest

AGENDA

- **0730** **Depart from Hotel**

- **0830** **Stop #1 -- NCDFR Forest Seedling Nursery**
- **0930** **Depart Claridge Nursery**

- **1045** **Stop #2 – Bladen Lakes State Forest**
- **1145** **Depart Bladen Lakes State Forest**
-
- **1215** **LUNCH -- Bayfield Tract Lodge**

- **1300** **Stop #3 , #4, # 5**

- **1515** **Return to Hotel**

- **1730** **Arrive at Greenville**

Weather Forecast

- HOT and HUMID !!

- Temp. 92 F

- RH 75%

- Rain 30 % PM Thunderstorms

- Stay Hydrated

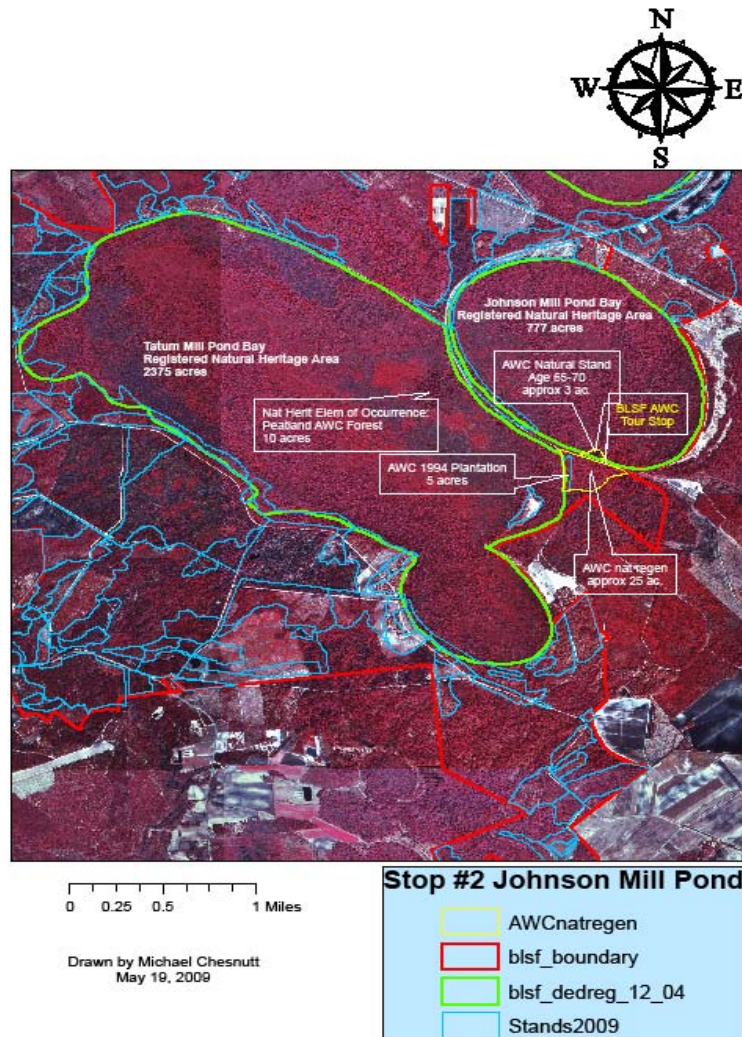
What to wear

- Boots
- Hat
- Long Pants
- Insects
 - ▣ Ticks
 - ▣ Chiggers
 - ▣ Yellow Flies
 - ▣ Mosquitoes
- Sun Screen

Claridge Nursery



Bladen Lakes State Forest



- Natural AWC
- Stocking Density
- Natural Heritage Sites

Bayfield



Summary

- Long Day
- Tight Schedule
- 250 miles – round trip
- Diverse Agenda
- Hot and Humid